

Guide for using the Color Inc ROES Pager Template Tool

Table of Contents

Section Name	Page Number
<i>Introduction</i>	1
<i>Opening and Closing the Pager Template Tool</i>	2
<i>Pager Template Tool Layout</i>	2
<i>Template Options</i>	3
<i>Node Options</i>	5
<i>Options for All Nodes</i>	5
<i>Text Node Only Options</i>	7
<i>Node Right Click Options</i>	7
<i>Designing Your Template with the Pager Template Tool</i>	8

Introduction

The ROES Pager Template Tool is a useful way for you to create basic templates in ROES. It allows you to create multi-node templates with support for adding text, custom backgrounds, and much much more.

This tool is available in several catalogs in the ColorInc ROES software. You can use it for designs in the Pager Template Tool Catalog, the Pager Template Tool Express Print Catalog, the Pager Template Tool Spiral Bound Proof Book Catalog, the Proof Magazine Catalog and the Greeting Card Catalog at this time.

There are video tutorials available on our web site as well for the Pager Template Tool. If you have any questions with this document, with the tutorial, or with any other issues that may arise when using the pager template tool, contact us at the lab via phone, e-mail, or live chat.

ColorInc Digital Pro Lab

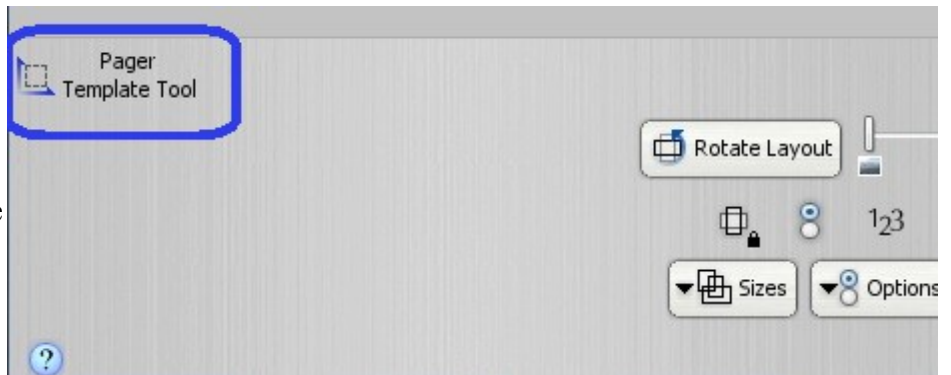
3280 Chicago Drive
Grandville, MI 49418
www.colorincprolab.com
info@colorincprolab.com



Opening and Closing the Pager Template Tool

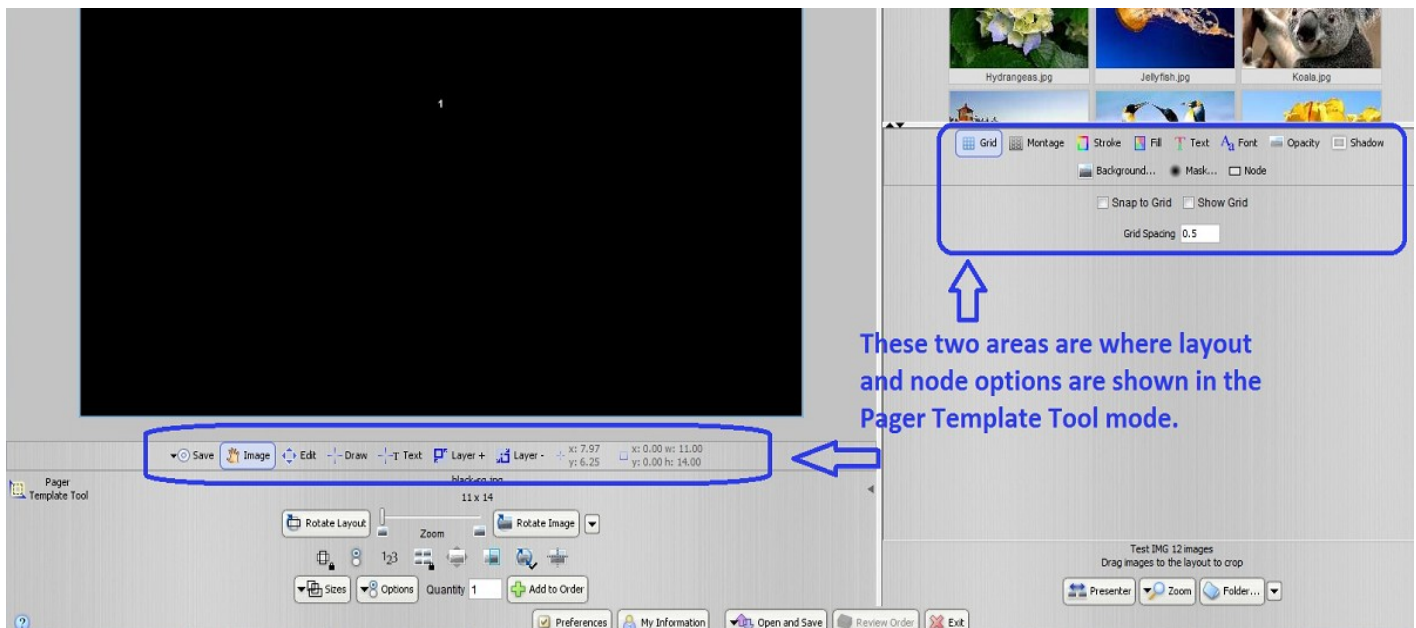
- Open the Pager Template Tool by clicking on the “Pager Template Tool” button.

This button is located on the left side of the ROES main screen just to the left of the “Rotate Layout” button, as seen at right.



- This button will open up several new areas in the ROES screen, in which you can work with the different features of the Pager Template Tool.
- To close the Pager Template Tool at any time, just click on the same button again or just switch to a new catalog, which hides the options by default.

Pager Template Tool Layout



- The options listed directly below the black template above are concerned with selecting, creating, and modifying the nodes in your template. We will refer to these as the template options.
- The options on the right side of the ROES screen have the function of modifying and customizing the nodes that you have created, so we will refer to these as the node options.

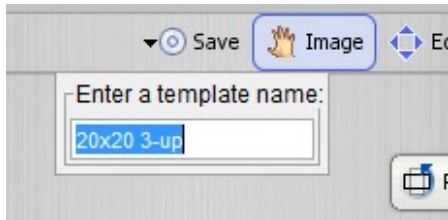


Template Options

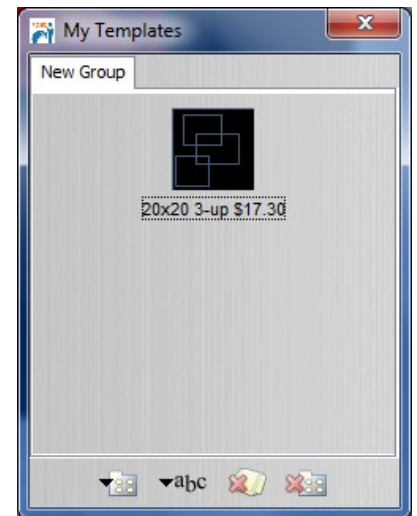


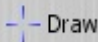
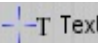
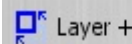
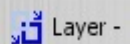
The template options allow the user of ROES to create, organize, and arrange the different nodes (customizable areas) into a template. We will examine each one in detail and talk about the function of each of these options.

- To save the template that you have already created, just click the “Save” button at any time. Clicking the button will prompt you to enter name for your template, so enter a short but yet descriptive name to distinguish it from other templates you might create.




Once you have saved the template, you can retrieve it at any time by clicking on it in the My Templates window, as shown at right.

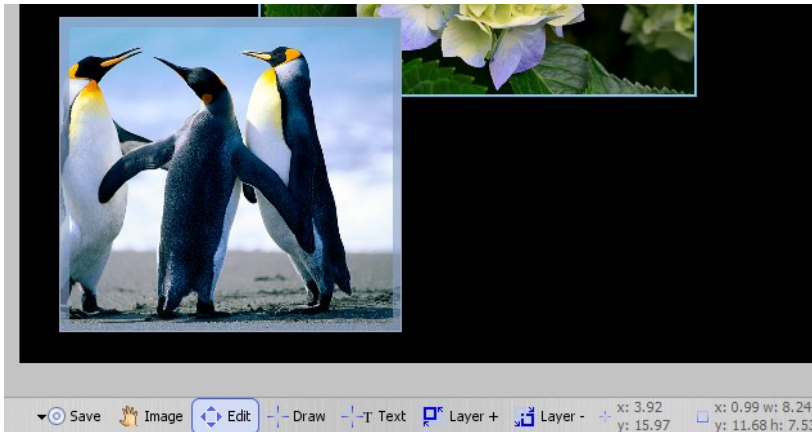


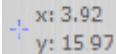
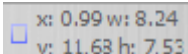
- To create new nodes, use the Draw and Text buttons. These let you draw a new node anywhere on the blank template you have above these options. The draw button is for creating new image nodes. These nodes would be the ones  where you would drag and drop an image when ordering. The text button lets you create a new text node,  where you would be able to enter custom text.
- Sometimes templates can have nodes that overlap to create a layered arrangement. In these cases, it is helpful to be able to adjust the stacking of the nodes. The “**layer +**” and “**layer -**” buttons allow you to make these adjustments.   “**Layer +**” brings that node one step closer to the forefront, while “**Layer -**” pushes that node one step closer from the forefront. It is often useful to think of the nodes stacked up on top of each other. Layer + and Layer – simply move the nodes up and down, respectively, in their stack position.

For example, if you have three nodes that overlap, and you want the node currently on the bottom to come to the top, you would have to click on that specific node and then click the “Layer +” button two times to move it up two times.

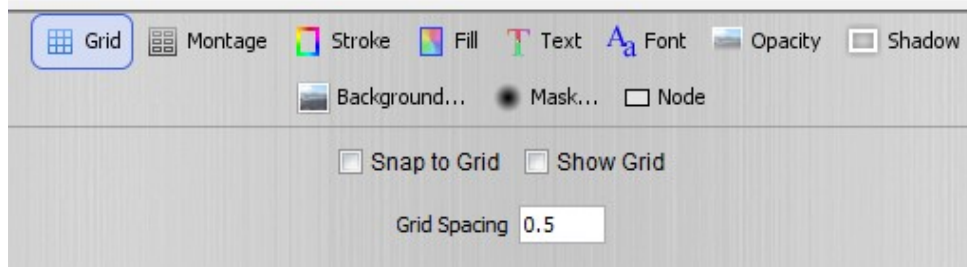


- If you just need to adjust the crop on the image that you have dragged into one of your nodes, then click on the “Image” button as shown at right.  This will enable you to click on an individual image and drag it to adjust the crop to your preference within the node. You also use this option to edit the text in Text nodes. Just click on the node, and a drop-down box will show below the node with the current text in it.



- The far right side of the template options includes an area showing information about the template over which the cursor is hovering. The first set of coordinates with the cross-hairs  shows the current x and y location of the cursor (in inches). The area with the square represents the node over which the cursor is hovering. The x and y coordinates are broken down in this area:  “x: 0.99” means the template starts .99” from the left side of the template, and the “w: 8.24” means that the specific node is 8.24 inches wide. The same concept applies for the coordinate.

Node Options



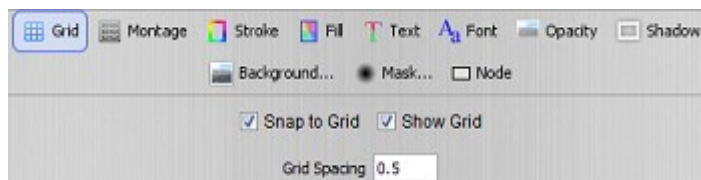
The template options shown above allow you to **customize the individual nodes in a template** and also **adjust some of the parameters of the template as a whole** as well.. We will examine each one in detail and talk about the function of each of these options. For each option, simply click on the node you would like to edit and then follow these instructions.



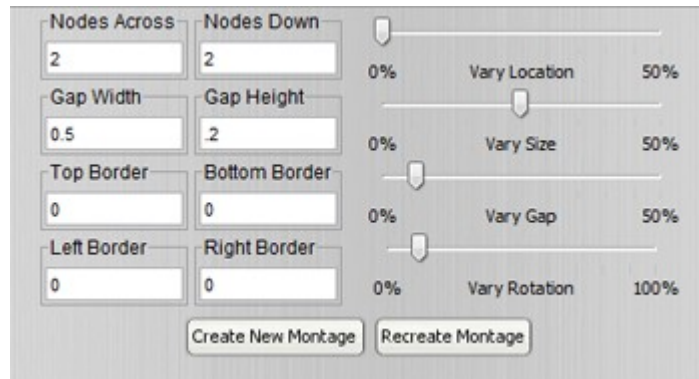
These three options are available on all types of nodes. To add a background image to a node, just click on the background button and then browse for that image on your local computer. The same is true for masks, which add an overlay onto the top of the image.

Clicking on the Node Option allows you to change a node's color options to Black and White or Sephia.

- Grid options are the first option for the nodes. Enabling the grid allows you to see a grid pattern over the entire template, making alignment easier for templates. You can edit the size of the grid lines to your preference. Also, you can enable the “**Snap to Grid**” check box for an easy way to ensure that the templates are lined up.



- The **Montage** option allows you to easily and quickly create a montage with different nodes arranged in a pattern. By manipulating the different settings below, and then clicking the buttons to create or recreate the montage, you can quickly and easily set up a structured node design.



The **Stroke**, **Fill**, **Opacity**, and **Shadow** options all allow you to customize **any node** in your template that you are designing. They each have their own specific options. Just click on any node, and then select the option from below that you would like to change.

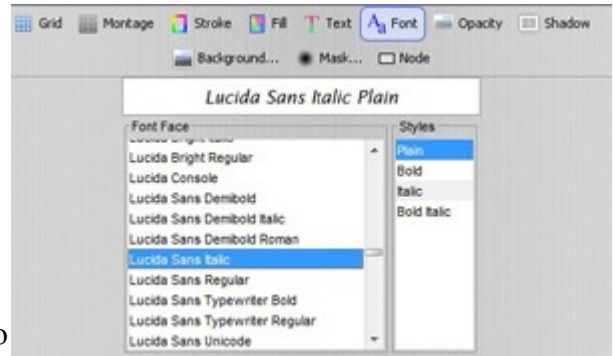


- **Stroke** allows you to add a border to the edge of the node. You can also specify the opacity of the stroke if desired.
- The **Fill** option allows you to pick a background color to fill the node with by default. Just click on the Fill option, then click the Fill check box. Select a color, and also adjust the opacity of that specific fill.
 - Images will cover the background by default, but if you would like to blend the background with the image, you can simply adjust the image opacity (see **Opacity** below) to allow for this effect.
- The **Opacity** tab allows you to adjust the node opacity or transparency. By default, this is set to 1.00, meaning the node is not at all transparent. By lowering this slider, you can make the node more transparent.
- **Shadow** allows you to create a shadow around a specific node. Make sure you click the Drop Shadow check box before changing the parameters of the shadow. Then you will be able to actually visually see the orders as they progress.



Two additional options are available **for text nodes only**. These are the **Text** and **Font** options, which allow you to further customize text nodes beyond the four options listed above. Just click on any node, and then select the option from below that you would like to change.

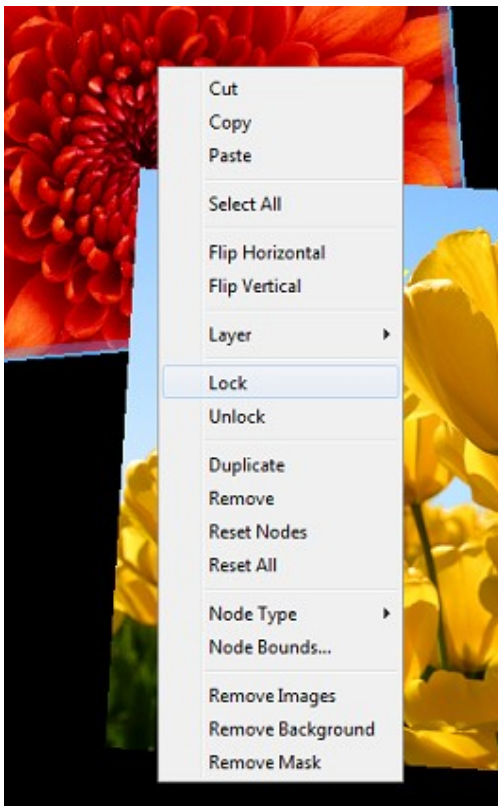
- The **Text** option lets you edit the color of the text that you have in a text node. All you need to do is pick a color!
- The **Font** option allows you to design templates with custom fonts that you have installed on your computer.



As you select a font from the list, you will be able to see a preview at the top of the font list, and you will also see the font updated in the node in your actual template.

Node Right Click Options

There are additional options beyond what the menus cover; **these can be accessed by right-clicking on any node in the image**. We will explore the function of a few options that are not obvious from their names.

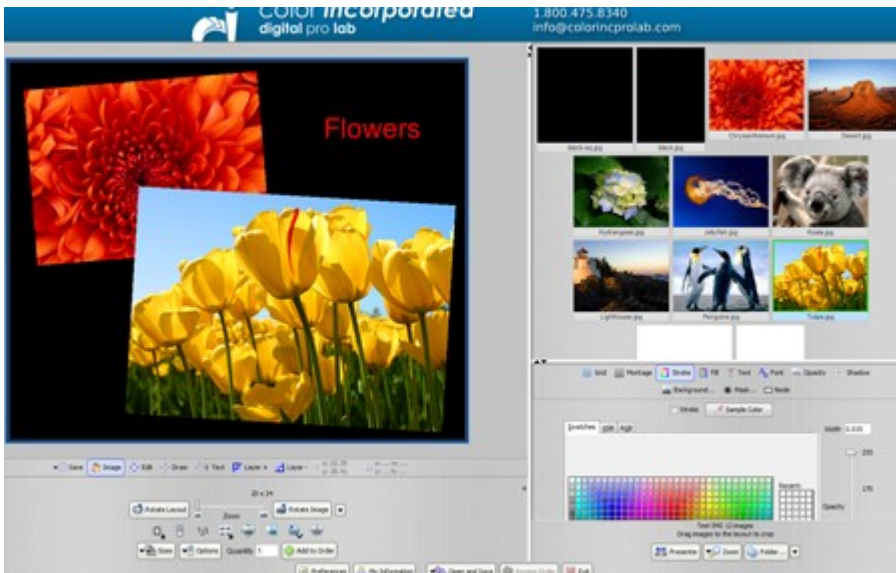
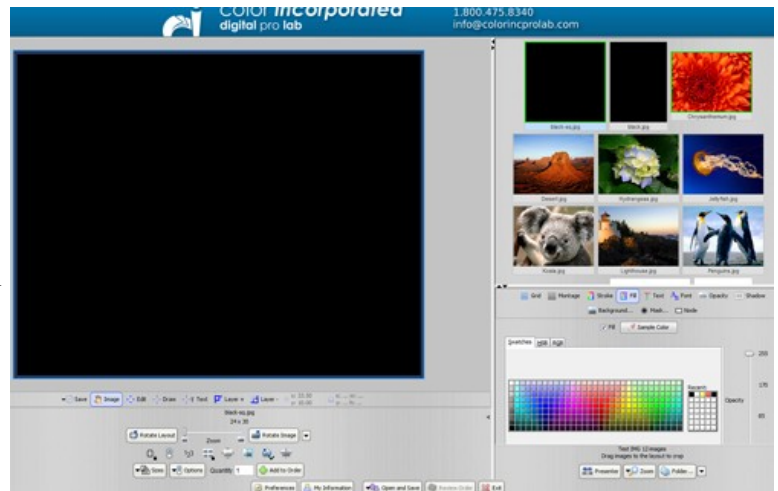


- **Lock** and **unlock** let you protect the template nodes from editing. Nodes cannot be re-sized, rotated, or moved when locked.
- **Duplicate** allows you to create an exact copy of a node. The node is created on top of the previous node, so you do have to change its location to make it visible. **Remove** permanently deletes a node from the template.
- **Node Type** allows you to change the type of node from Text to Image or the inverse. You can also change nodes to be empty. **Node Bounds** allows you to precisely set node width, height, and rotation.
- **Remove Images** lets you clear a node of any images. **Remove Background** removes a custom background you may have selected for a node, and **Remove Mask** takes away any mask you have set.

Designing your template with the Pager Template Tool

These are the general steps you would take to build a template. Remember that these steps are merely suggestions, not strict guidelines; the actual steps of building a template can be changed to whatever is most convenient for you!

1. Select the product from the ROES catalog that you would like to customize with the Pager Template Tool.
2. Select a background for your template. It can be a solid color (click on the node then click on **Fill**) or an image of your choice (click on the **Background** button).
3. Draw your nodes one by one, adjusting the positioning, rotation, and size as needed using the **Edit** option. Keep the **Montage** option in mind if you would like your template to be an organized grid of images.



4. Once your positioning is all completed, you can start dragging in images and customizing the text in the text nodes, as seen at left.
5. Customize any effects such as **Drop Shadows, Masks, and Opacity** effects.
6. **Save** your template for later use! All your work is then completed. You can continue building the rest of your order, or submit the order if it is complete.

